



# ELCA

RADIOCONTROLS



**ELCA**, designs, produces and sells high-quality industrial cable control units and remote radio controls offering full operational satisfaction and services that meet the needs of its customers.

---

**ELCA FOR:** INDUSTRY - LIFTING, LOGISTICS, AUTOMATISMS, PROCESSES, CONSTRUCTION AND CONCRETE, AGRICULTURE, FORESTRY, VEHICLE OUTFITTING, ECOLOGY, SUSTAINABILITY, MOBILE LIFTING, DRILLING, MATERIAL MINING.





## **INDUSTRIAL LIFTING**

gantry crane  
(beam, gantry, jib).

---

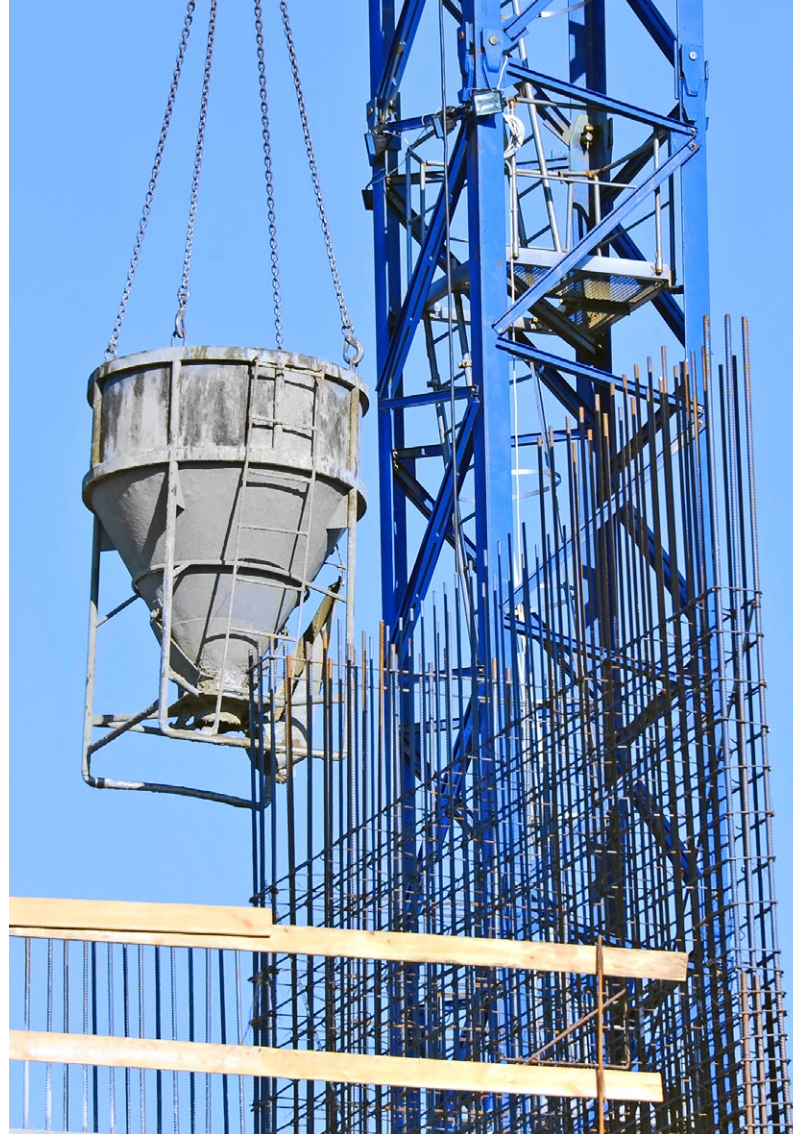
GANTRIES AND LIFTING WINCHES ARE USUALLY PURCHASED WITH ONLY PENDANT CABLE CONTROLS; THE DESIRE TO FREE THE OPERATOR FROM THE MOVEMENT CONSTRAINTS IMPOSED BY THE CABLE THEN DRIVES THE DEMAND FOR THE INSTALLATION OF REMOTE RADIO CONTROLS. ON TOP OF THESE ADVANTAGES, THERE IS ANOTHER THAT IS EVEN MORE IMPORTANT: THE SAFE CONTROL OF THE MACHINE AT A DISTANCE FROM HANGING LOADS AND DANGER ZONES. THE HANDLED LOAD AND SURROUNDING AREA ARE ALWAYS CLEARLY VISIBLE.

# CONSTRUCTION

tower crane,  
self-erecting crane,  
jib crane.

---

THE CONSTRUCTION SECTOR WAS THE FIRST TO BENEFIT FROM THE USE OF REMOTE RADIO CONTROLS TO CONTROL CONSTRUCTION CRANES. THE OPERATOR CAN ALWAYS CHOOSE THE SAFEST POSITION WITH A DIRECT VIEW OF THE HANDLED LOAD; HANDLING MATERIALS ON THE SITE IS EFFECTIVE AND ACCURATE. ELCA ALLOWS YOU TO CHOOSE BETWEEN PUSH-BUTTON PANELS AND WAIST PORTABLE RADIOCONTROLS WITH JOYSTICK, APPLICABLE TO ALL CRANE MODELS. EASY-TO-WIRE RECEIVERS (OPTIONAL SERVICE) INSTALLED OUTSIDE THE ELECTRICAL PANEL (PROTECTION RATING IP65) OR INSIDE (OPTIONAL EXTERNAL ANTENNA KIT).





## **CONCRETE**

concrete pumps,  
concrete mixing.

---

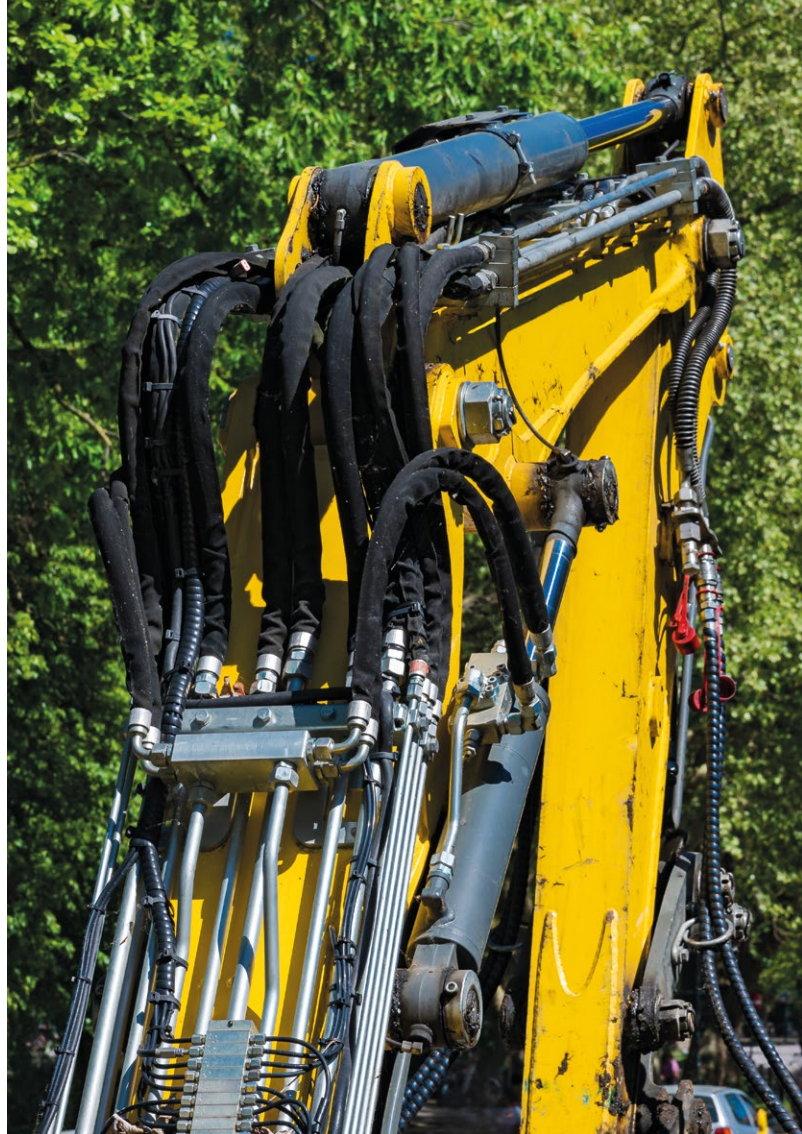
CONCRETE HANDLING REQUIRES THE USE OF “INDESTRUCTIBLE” MACHINERY AND TOOLS, WHICH ARE ALWAYS PUT TO THE TEST IN TOUGH WORKING ENVIRONMENTS. ELCA REMOTE RADIO CONTROLS ARE REALLY USEFUL FOR CONCRETE PUMPS (STATIONARY OR TRUCK-MOUNTED); THE OPERATOR CAN PRECISELY DOES THE MATERIAL FLOW FROM THE BEST POSITION, WITHOUT ANY CABLES GETTING IN THE WAY. THE WORK IS MORE EFFICIENT, EVEN ON CONCRETE MIXERS OR OTHER MACHINERY IN THIS FIELD OF APPLICATION. PROMPT, PRECISE AND SAFE OPERATION MARK THE SUCCESS OF THE WORK DONE.

## MOBILE LIFTING

mobile cranes,  
hydraulic truck-mounted cranes,  
overhead platforms.

---

CRANES ARE ALWAYS USED IN DIFFERENT PLACES AND POSITIONS; IT IS THEREFORE IMPORTANT THAT THE REMOTE RADIO CONTROL CAN WITHSTAND ANY DISTURBANCES IN THE WORK AREA. THE LIFTING AND HANDLING MANOEUVRES PERFORMED WITH A RADIO-CONTROLLED CRANE CAN ALWAYS BE DONE FROM THE SAFEST, MOST PRECISE AND EFFECTIVE POSITION, AVOIDING UNNECESSARY MOVEMENTS. THE ELCA RANGE ADAPTS TO DIFFERENT NEEDS, ALWAYS OFFERING THE BEST OPTION INCLUDING READY-TO-USE “PLUG&PLAY” SYSTEMS!





## **AGRICULTURE**

machinery, drives, processes.

---

IN THIS SECTOR TRADITION AND MODERNITY LIVE SIDE BY SIDE, ALWAYS FINDING THE BEST AND MOST SUSTAINABLE SOLUTION. AT THE REQUIRED DISTANCE, THE REMOTE RADIO CONTROL IS USED TO CONTROL EXTERNAL DRIVES TO THE MACHINE BEING USED, AVOIDING THE USE OF EXTENSION CABLES WHICH HINDER THE WORK, FIXED STATIONS, EXCESSIVE DISTANCES, REPETITIVE CONTROLS; THE AUTONOMOUS PERFORMANCE OF JOBS THAT USUALLY NEED AN EXTRA PERSON! IN THIS SENSE, THE ELCA REMOTE RADIO CONTROL IS A RELIABLE PARTNER THAT MAKES WORK EASIER AND MORE PRODUCTIVE.

# FORESTRY

wood collection  
machinery.

---

WORKS AT A HEIGHT HAVE TO BE PERFORMED BY TRAINED PROFESSIONALS WHO HAVE HIGH-QUALITY SYSTEMS AND TOOLS AT THEIR DISPOSAL; WITH THE ELCA SAFETY REMOTE RADIO CONTROLS FOR FORESTRY MACHINERY, THEY CAN WORK BETTER AND BE PROTECTED FROM POTENTIAL RISKS. REMOTE CONTROLLING, WITHOUT ANY HINDERING CABLES, MEANS BEING ABLE TO CHOOSE THE SAFEST POSITION WITH THE BEST VISIBILITY, ALWAYS IN VISUAL CONTACT WITH THE LOAD BEING HANDLED. ELCA REMOTE RADIO CONTROLS ARE MADE WITH HIGH-QUALITY MATERIALS, AND ARE LIGHTWEIGHT AND COMPACT, MADE TO LAST. THE LOW-CONSUMPTION ELECTRONICS ARE POWERED BY A LITHIUM BATTERY WITH 50 HOURS OF CONTINUOUS USE, 100% DUTY CYCLE (A WEEK'S WORK WITHOUT THE NEED FOR CHARGING).





## **INDUSTRIAL AND LOGISTICS PROCESSES**

handlers, drives, processes.

---

THE ABILITY TO ACHIEVE THE BEST VALUE FOR MONEY FOR EVERY GOOD PRODUCED MEANS BEING MORE COMPETITIVE AND WINNING ON EQUAL QUALITY TERMS. APPLIED TO A WIDE RANGE OF INDUSTRIAL MACHINERY AND PROCESSES, ELCA REMOTE RADIO CONTROLS ALLOW THE OPERATOR TO WORK BETTER AND AUTONOMOUSLY, WITHOUT BEING CONDITIONED BY THE CABLE, REACTING PROMPTLY IN THE EVENT OF VISUAL OR ACOUSTIC SIGNALS ACTIVATED BY THE CONTROL SYSTEM. ACTIONS WITHOUT WASTING TIME, MORE PRECISE AND DIRECT CONTROLS, HIGHER OPERATING SAFETY.

## VEHICLE OUTFITTING

recovery vehicles,  
food trucks,  
loading platforms.

---

VEHICLE OUTFITTERS WANT TO INSTALL EASY-TO-USE REMOTE RADIO CONTROLS WITH “H24” RELIABILITY. RECOVERY VEHICLES USE COMPACT PUSH-BUTTON CONTROLS AND THE RADIO MUST BE DISTURBANCE-FREE (OPERATING AREAS WITH SIGNAL CROWDING) WITH LONG-LASTING LITHIUM BATTERIES. ANIMAL TRANSPORT REQUIRES MANY CONTROLS. THE REMOTE RADIO CONTROL FACILITATES THE OPERATIONS TO PERFORM, ALLOWING WORKERS TO WORK ALONE, CHOOSING THE MOST EFFECTIVE AND SAFEST POSITION WITHOUT HAVING TO CONTINUOUSLY MOVE FROM ONE SIDE TO ANOTHER OR CLIMB UP AND DOWN.





## **MATERIAL MINING**

quarry machinery,  
sawing machines, mills,  
vibrating screens, wreckers,  
conveyor belts.

---

MINING APPLICATIONS PUT REMOTE RADIO CONTROLS TO THE TEST; HEAVY-DUTY CONDITIONS - DUST, WATER, OILS AND VIBRATIONS - HAVE TO BE TACKLED WITH HIGHLY RELIABLE, EASY MAINTENANCE SYSTEMS. BUILT IN ITALY, ELCA REMOTE RADIO CONTROLS USE ONLY THE HIGHEST QUALITY MATERIALS AND ANY WORN PARTS ARE REPLACED WITHOUT THE NEED FOR SPECIFIC TOOLS OR COMPUTERS (ALSO WITH DIRECT INTERVENTION ON THE SITE).

# DRILLING

drilling and  
tunnel boring machinery.

---

A TOUGH ENVIRONMENT FOR BOTH HUMANS AND MACHINERY; PROTECTING SAFETY AND OPERATIONAL RESULTS WITH INSTRUMENTS OF PROVEN HIGH-QUALITY. ELCA REMOTE RADIO CONTROLS OFFER SPECIFIC SOLUTIONS FOR EACH MACHINE; ON SITE, THE TECHNICIANS WORK BETTER WITH MORE OPERATING FREEDOM. HANDLING MATERIALS AND ACTUATORS ARE CHOSEN TO LAST, AND WHEN NEEDED, CAN QUICKLY BE REPLACED WITH STANDARD TOOLS.





## **ECOLOGY, SUSTAINABILITY**

drain cleaning pumps,  
dust suppression cannons,  
compacting presses.

---

IN THIS SECTOR, ACTIVITIES ARE OFTEN PERFORMED IN HARD-TO-ACCESS PLACES WHICH ALSO COMPROMISE THE PROPAGATION OF THE RADIO SIGNAL; COMPACT, STURDY AND LIGHT-WEIGHT FORMS ARE PREFERRED. PREPARATION, CLEANING AND INSPECTION OPERATIONS ARE QUICK AND EASY; WITH HAZARDOUS OR COMPLEX MANOEUVRES, THE OPERATOR REMAINS AT A SAFE DISTANCE. THE CONSTANT RISK OF CONTACT WITH WATER AND OTHER LIQUIDS MAKES THE CHOICE OF WELL-PROTECTED SYSTEMS (IP65) MADE WITH DURABLE MATERIALS, OBLIGATORY.

## INDUSTRIAL AUTOMATION

PLCs, contactors control,  
relays control.

---

SOLUTIONS TO SIMPLY INCREASE PRODUCTIVITY AND CONTROL RESOURCES, EVEN IN CONVENTIONAL AND MECHANICAL SECTORS. RADIO REMOTE CONTROLS ARE ALWAYS ON THE “INGREDIENTS” LIST OF ENGINEERS WANTING TO PROVIDE WINNING SOLUTIONS! ELCA CUSTOMERS HAVE ACCESS TO CASES, PUSH-BUTTON PANELS AND WAIST PORTABLE RADIOCONTROLS WITH DIFFERENT SHAPES AND SIZES THAT CAN INSTALL THE MOST SUITABLE CONTROLS - BUTTONS, SWITCHES, JOYSTICKS, POTENTIOMETERS, ... - AND SPECIFIC OPERATING LOGICS. WHEN INCLUDED IN THE ORIGINAL DESIGN, THE REMOTE RADIO CONTROL HELPS TO CREATE MACHINES THAT ARE SIMPLER AND CHEAPER TO USE - FEWER FIXED STATIONS, ADDITIONAL CONTROLS AND DUPLICATED ACTUATORS -.





## THE ELCA RANGE OF RADIO REMOTE CONTROLS

ELCA practices continual improvement, exploiting the acquired skills to benefit its products, solutions and processes, engaging its staff by enhancing their work and professional skills and making them responsible for their actions.

**The ELCA “musts”:** customer service, high-quality components, reliable, easy-to-use products, safety, design.

---

### **MITO SERIES**

HANDHELDS: MINI, MINI+

WAIST PORTABLE RADIOCONTROLS: PIC, VETTA

### **E SERIES**

HANDHELDS:

MINI+ (E1), MIA, EVO (E1)

WAIST PORTABLE RADIOCONTROLS:

PIC, VETTA, PUNTO, SFERA, VEDO, M

### **MAGO SERIES**

EVO HANDHELD

### **BRAVO SERIES**

WAIST PORTABLE RADIOCONTROLS: VEDO, M

# MINI compact handheld

DIMS. 60X113X26 mm  
 LIGHTWEIGHT: 100 g  
 4-8-10 CONTROLS  
 STATUS LEDES  
 LITHIUM BATTERY



MINI is a compact remote radio control for use in all electrical systems.

Easily customisable control panel and operating modes; protection rating IP67; floating.

LBT Listen Before Transmit electronics avoiding interruptions due to radio frequency disturbances.

Power supply with internal rechargeable lithium battery with up to 50 hours' continuous use.

Two-way technology; configurations with more than one transmitter/receiver.

## APPLICATIONS

breakdown assistance - concrete - pumps - industrial automation - logistics

# MINI+ (Plus) compact handheld

DIMS. 62X137X35/47/70 mm  
 4-6-8 CONTROLS  
 STOP Cat.3 PLd (opt.) \*  
 4 Feedback LEDS \*  
 single/double release \*



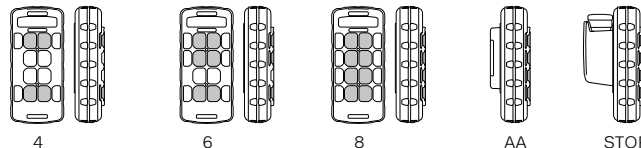
MITO

E1

E1 series \*

MINI+ (Plus) is the compact push-button panel (200 g) that extends the MINI range. 4-6-8 control configurations with clearly visible symbols. Excellent ergonomics, even when wearing gloves.

E1 electronics have a standard version with Stop mushroom button up to category 3 PL d EN ISO 13849-1; feedback signals with 4 programmable LEDs; double-release buttons. Powered by lithium battery, power supply with Elca-Clip USB charging cable (option AA battery, no charging).



4

6

8

AA

STOP

## APPLICATIONS

logistics - vehicle outfitting - lifting - industrial applications

## E - MITO SERIES

### PIC compact waist portable radiocontrol

DIMS.125X87X70 mm  
3 x 3-POSITION SELECTORS \*  
STOP Cat.3 Pld \*  
POTENTIOMETER \*  
4 Feedback LEDS \*

E series \*



MITO



E

PIC is a compact waist portable radiocontrol with E or MITO technology. The controls are operated using 3-position toggle switches and can be customised. Power supply with replaceable and rechargeable long-life lithium battery (up to 50 hours with the Mito range, up to 20 with E). The new electronic E series is used to all additional functions, including: analogue potentiometer, 4 feedback LEDs, emergency stop circuit up to category 3 PL d according to EN ISO 13849-1.

Supplied with a comfortable belt.

### APPLICATIONS

forestry winches - concrete - generic controls

## E - MITO SERIES

### VETTA compact waist portable radiocontrol

DIMS.170X81X74 mm  
5 x 3-POSITION SELECTORS \*  
STOP Cat.3 Pld \*  
POTENTIOMETER \*  
4 Feedback LEDS \*

E series \*



MITO



E

The VETTA compact waist portable radiocontrol is very sturdy and reliable, with a compact size and reduced weight.

Mito or E electronic system.

Two-way technology, continuous visual feedback on the receiver when on and ready to receive controls. The internal and rechargeable long-life lithium battery lasts up to 50 hours with the Mito range, and up to 20 with E.

The systems include:

transmitter, receiver, USB power supply, ELCA-CLIP cable and belt.

### APPLICATIONS

forestry winches - logistics - industry - concrete

## E1 - MAGO SERIES

# EVO handheld



DIMS.72X193X44 mm  
6 BUTTONS  
WITH DOUBLE RELEASE  
4 Feedback LEDS

EVO is the standard ELCA push-button panel for radio-controlling lifting and handling machinery and systems. With 6 double-release buttons, one single-release button for programmable functions, Start and Stop and key with activation code. Programmable auto-off and protection rating IP65; internal rechargeable lithium battery for up to 40 hours of continuous use; 4 feedback LEDs. ELCA-CLIP power supply.

### APPLICATIONS

bridge cranes - construction cranes - industrial applications

## E SERIES

# MIA handheld



DIMS.72X235X60 mm  
10 BUTTONS  
WITH DOUBLE RELEASE  
4 Feedback LEDS  
+ SIDE FUNCTIONS (opt.)

MIA is an industrial remote radio control with push-button panel, which won the iF Design Award. Available with up to 23 digital controls with 10 double-release and 2 programmable single-release buttons, Start and Stop function. Protection rating IP65, LBT electronics. Main options: 1.0.1 toggle switch, side buttons, potentiometer for proportional control, feedback with 4 LEDs, version with Display. "Easy pairing" code key; interchangeable lithium battery with built-in battery charger, ELCA-CLIP power supply.

### APPLICATIONS

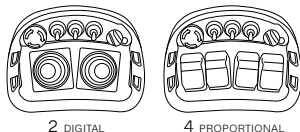
bridge cranes - lifting - building cranes - vehicle recovery

## PUNTO waist portable radiocontrol

DIMS.175X140X132 mm  
2 PROPORTIONAL  
JOYSTICKS "o"  
4 SINGLE-AXIS JOYSTICKS  
3 SWITCHES  
CUSTOMISATIONS



PUNTO is a compact waist portable radiocontrol. The standard configuration includes the use of 2 two-axis or 4 single-axis joysticks, digital or proportional, 3 toggle switches, removable on/off key and Stop button. The transmitter can be customised to meet the specifications provided by the customer with knobs, buttons and switches. The system includes: transmitter, receiver, 2 rechargeable NiMH batteries, power supply and a comfortable belt.



2 DIGITAL

4 PROPORTIONAL

### APPLICATIONS

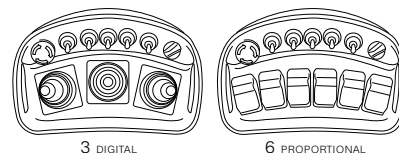
cranes - bridge cranes - building cranes - custom solutions

## SFERA waist portable radiocontrol

DIMS.241X148X160 mm  
3 PROPORTIONAL  
JOYSTICKS "o"  
6 SINGLE-AXIS JOYSTICKS  
5 SWITCHES  
CUSTOMISATIONS



The SFERA waist portable radiocontrol has the same features as the PUNTO model but is slightly larger with space for 3 two-axis or 6 single-axis joysticks and 5 toggle switches, removable on/off key and Stop button. The availability of a larger useful surface makes it ideal for customisation. The excellent ergonomics and reduced weight make it very comfortable for prolonged use.



3 DIGITAL

6 PROPORTIONAL

### APPLICATIONS

concrete pumps - building cranes - bridge cranes - lifting - cranes

## E - BRAVO SERIES

# VEDO waist portable radiocontrol



DIMS. 251x167x177 mm  
2 PROP. DOUBLE/TRIPLE AXIS  
JOYSTICK "or"  
5 PROP. SINGLE-AXIS JOYSTICKS  
6 SWITCHES  
2 PULSANTI LATERALI  
CUSTOMISATIONS

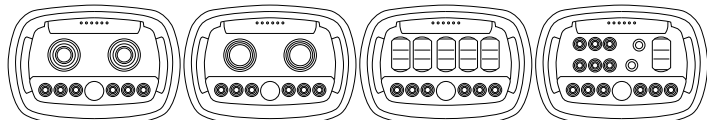
VEDO waist portable radiocontrol with "on-top" and side controls, magnetic "CONTACTLESS" hardware key (PIN ID available).

Programmable outputs CanBus, PROFIBUS, PROFINET, EtherNet/IP (AR E FLEXI, AR E MAXI). Interchangeable lithium battery.

Optional graphic DISPLAY with CODESYS (IEC 61131-3 compliant).

Code key accessible from the outside. Modular perimeter protection.

Awarded with iF Design Award 2025.



2 SINGLE/DOUBLE AXIS

2 TRIPLE AXIS

5 SINGLE AXIS

CUSTOMISATIONS  
ON REQUEST

## APPLICATIONS

forestry trailer - automation - building cranes - bridge cranes - lifting

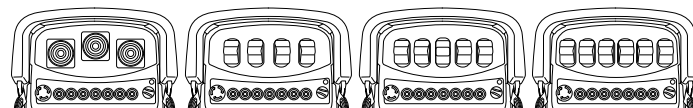
## E - BRAVO SERIES

# M waist portable radiocontrol



DIMS. 285X180X200 mm  
3 PROPORTIONAL  
JOYSTICKS "o"  
4-5-6 SINGLE-AXIS JOYSTICKS  
7 SWITCHES  
CUSTOMISATIONS

The M transmitter is chosen for its flexibility and abundant useful space. The M model can fit single- or two-axis joysticks with a variety of layouts with potentiometers, toggle switches, different kinds of buttons, with up to 8 proportional outputs with 28 digital or 42 digital. Interchangeable lithium battery for up to 20 hours of continuous operation. Automatic frequency change; remote set-up of analogue controls makes it one of ELCA's best-selling systems.



3 DIGITAL

4 PROPORTIONAL

5 PROPORTIONAL

6 PROPORTIONAL

## APPLICATIONS

proportional controls - concrete pumps - custom solutions

## CABLE CONTROLS

**TEL-VEDO**  
**TEL-PUNTO**  
**TEL-SFERA**  
**TEL-M**  
**TEL-VAI**



The cable control unit is used in place of the remote radio control when limitations of use apply (airports and military areas), as a backup system to avoid machine stoppages (radio/cable control unit with the same configuration), when it is not possible to fit a fixed control panel or when cable-operated controls are preferred.

Configuration of controls, digital or proportional technology, cable length, available on request.

## APPLICATIONS

airports - military areas - concrete pumps

## RECEIVERS

**MAXI**

DIM.227X276X105 mm

**FLEXI**

DIM.133X256X88 mm

**MIDI**

DIM.152x152x75 mm

**MINI**

DIM.110X165X50 mm

**DIN**

DIM.45X140X60 mm

**BRAVO**

DIM.210X183X60 mm



The receiving unit is an integral part of the remote radio control system. Connected to the electrical panel of the machine to be controlled, it is switched on by a start command from the transmitter and is ready to receive the controls

The models and electronics used vary according to the type and number of functions, on-off, proportional outputs, power supply (Vac, Vdc).

ELCA receivers are easy to install and designed to work in extreme conditions.

Wiring, connections, fixing plates, external antennas, available on request.

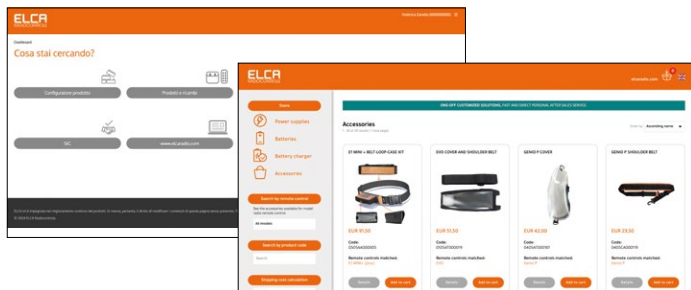
## STANDARD SYSTEMS

1 Transmitter Unit + 1 Receiving Unit

## MULTI KEY SYSTEMS

multi-transmitter and multi-receiver systems on request

## ACCESSORIES and SPARE PARTS



The choice of accessories and spare parts is simple.  
Business Partner section:  
request your access credentials from ELCA to access the  
section and simultaneously select all the accessories and  
spare parts for the purchased remote radio controls.

## CONTACTS

[info@elcaradio.com](mailto:info@elcaradio.com)

[customer.service@elcaradio.com](mailto:customer.service@elcaradio.com)

tel +39.0424.578500

fax +39.0424.578520

## WHERE WE ARE

ELCA SRL, via del Commercio 7/b - 36065 Mussolente (VI) - Italia

ELCA srl strives to continuously improve its products; it therefore reserves the right to modify the contents of this brochure without notice. All rights reserved.

## NOTES

